



# PM Stepping Motor

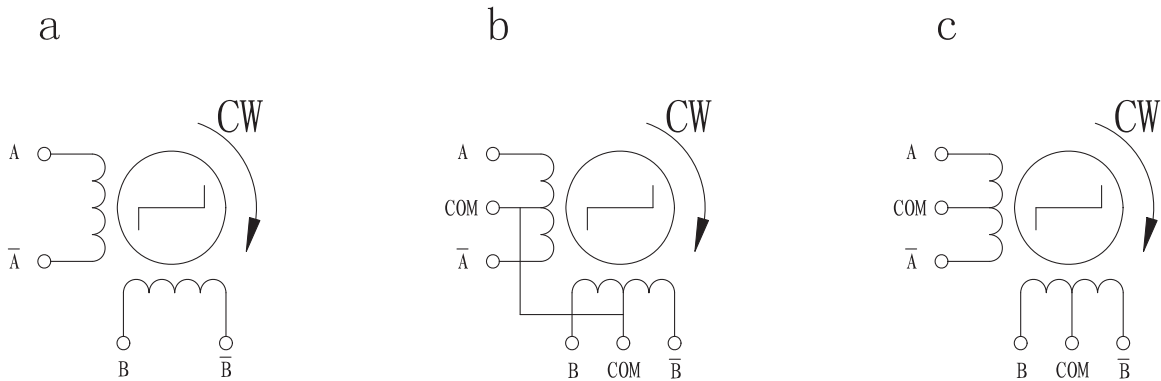
## 20BY Series



### ● Specifications

Model	Step Angle (Deg.)	No. of Phase	Voltage (V)	Current (A)	Resistance ( $\Omega$ )	Inductance (mH)	No-load Starting Frequency (pps)	Pull-in Torque (g.cm)	Detent Torque (g.cm)	Holding Torque (g.cm)	Leads	Wdg	Fig
20BY20L01	18	2	5	0.5	10	4.3	600	10	20	60	UL 1061 28#	a	1
20BY20L02	18	2	5	0.39	13	7.4	500	5	20	40		a	2
20BY20L014A	18	4	12	0.4	30		850	25	20	55	UL 1571 28#	c	3
20BYUAG2	18	4	12	0.07	170	42.6	500	10	10	35	UL 2651 28#	b	4
20BY20B01	18	2	12	0.08	280	81.7	800	13	20	90	UL 1061 28#	a	5
20BY20L023A	18	2	12	0.69	17.5	10	1150	27.5	10	125	UL 1061 28#	a	6
20BY20Y-039A	18	2	5	0.25	20	10.5	370	15	10	65	UL 1095 28#	a	7

### ● Wiring Diagram



● Dimensions

Fig1

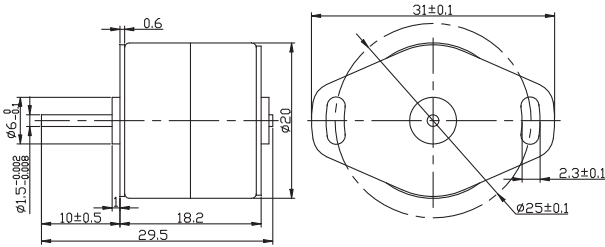


Fig2

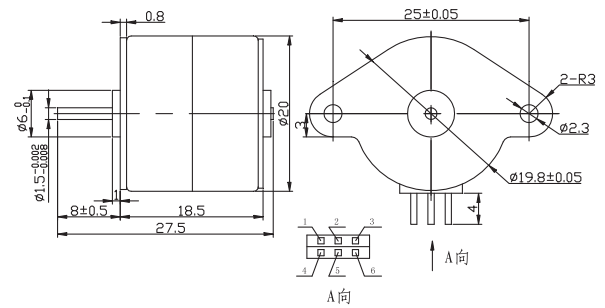


Fig3

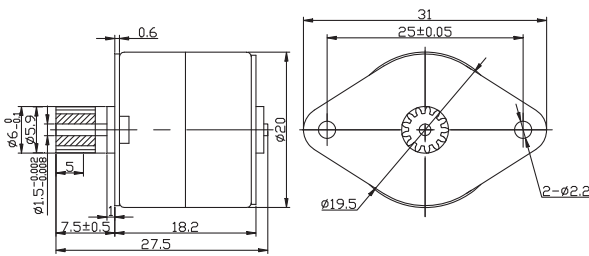


Fig4

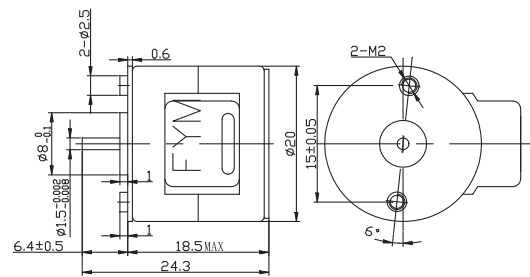


Fig5

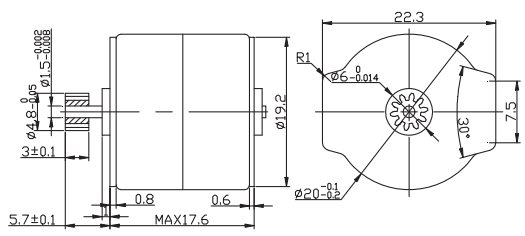


Fig6

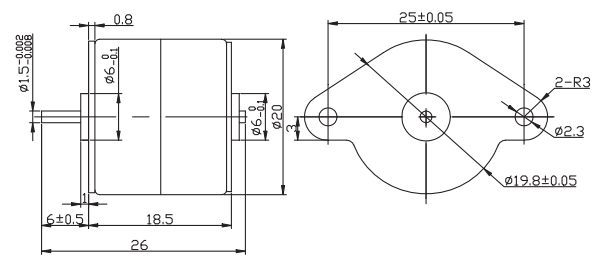
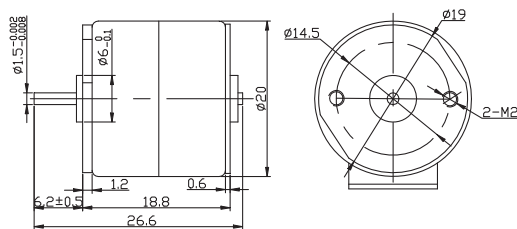


Fig7



\*This motor can be designed & manufactured with customized request.