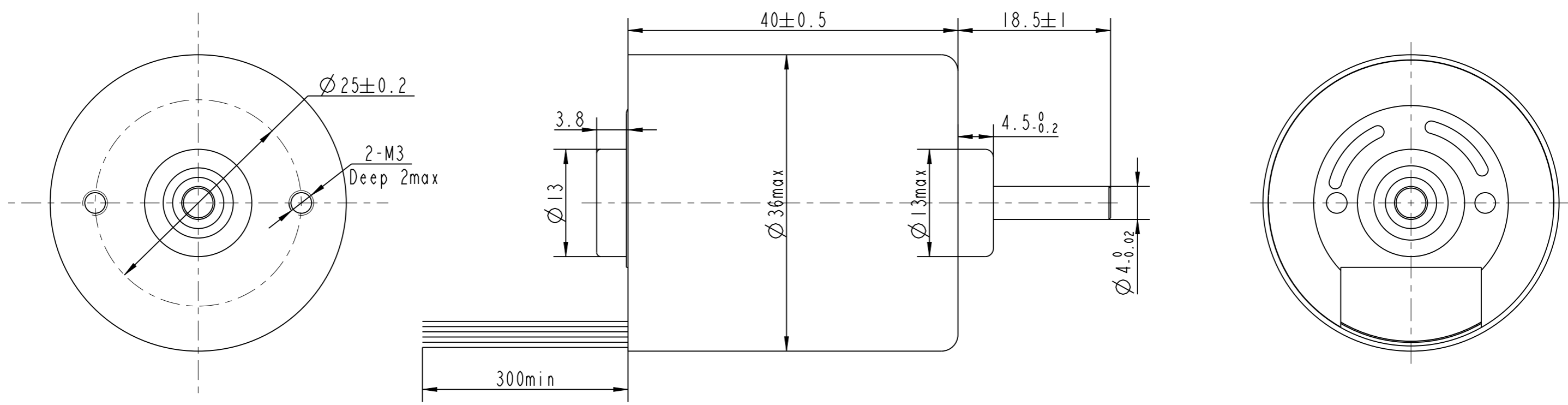


REV	ECN	NO	DESCRIPTION	DRN	APP'D	DATE



从前出轴看, CW

NUMBER OF PHASE	绕组相数	3							
NUMBER OF POLES	极数	8							TACHO OUT
LINE TO LINE RESISTANCE	线电阻	$2 \pm 10\%$ ohms@20°C							YLW
LINE TO LINE INDUCTANCE	线电感	$1.75 \pm 20\%$ mH@1kHz	Wires UL1430 +24V/GND AWG24, other AWG26						
NOMINAL VOLTAGE	额定电压	24 VDC	Vcc	F/R	PWM	BRAKE	GND		
NO LOAD SPEED	空载转速	$6000 \pm 10\%$ RPM	RED	BLU	GRN	WHT	BLK		
NO LOAD CURRENT	空载电流	0.25 A REF	PERMISSIBLE RADIAL+AXIAL FORCE						
RATED TORQUE	额定转矩	35 mN.m							
RATED SPEED	额定转速	$4800 \pm 10\%$ RPM							
RATED CURRENT	额定电流	1 A							
PEAK TORQUE	峰值转矩	105 mN.m							
PEAK CURRENT	峰值电流	3 A							
BACK EMF CONSTANT	反电势常数	$3 \pm 10\%$ Vrms/kRPM							
TORQUE CONSTANT	转矩常数	40 mN.m/A							
INSULATION CLASS	绝缘等级	B 130°C	AXIAL-FORCE	轴向压力	Fa=10 N Max				
DIELECTRIC STRENG	介电强度	600VAC ISEC	DISTANCE	距离	a=10 mm				
INSULATION RESIST	绝缘电阻	100MOhm @500VDC	RADIAL-FORCE	径向压力	Fr=28 N Max				
ROTOR INERTIA	转子转动惯量	12g.cm <sup>2</sup>	SHAFT RADIAL PLAY	径向间隙	0.02mm Max.@4N				
WEIGHT	重量	0.16Kg	SHAFT AXIAL PLAY	轴向间隙	0.14mm Max.@4N				
OPERATION AMBIENT	使用环境	Ambient temperature:-25...+55°C, humidity Max.85%(No condensation)							
STORAGE AMBIENT	存储环境	Ambient temperature:-25...+85°C, humidity Max.85%(No condensation)							

A	REV	ECN NO.	DESCRIPTION	DESIGN	DATE	P/N.	TITLE
						3.1.02.036.****	SPECIFICATIONS
UNLESS OTHERWISE SPECIFIED			MATERIAL	CONTR.	CHECK	USED ON	FL36CBL40-24V-4818A-1E-01
TOLERANCES:						DWG NO.	REV A
DECIMALS:							
ANGULAR:							
.X ±0.5							
.XX ±0.25							
.XXX ±0.1							
UNIT: mm			FIRST ANGLE PROJECTION	SCALE 2:1		FULLING MOTOR	
DO NOT SCALE DRAWING						SHEET 1 OF 1	