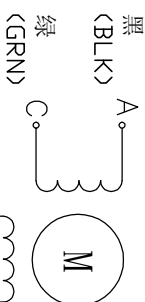


REV	ECN NO.	DESCRIPTION	DRN	APP'D	DATE

Wiring Diagram (接线图)

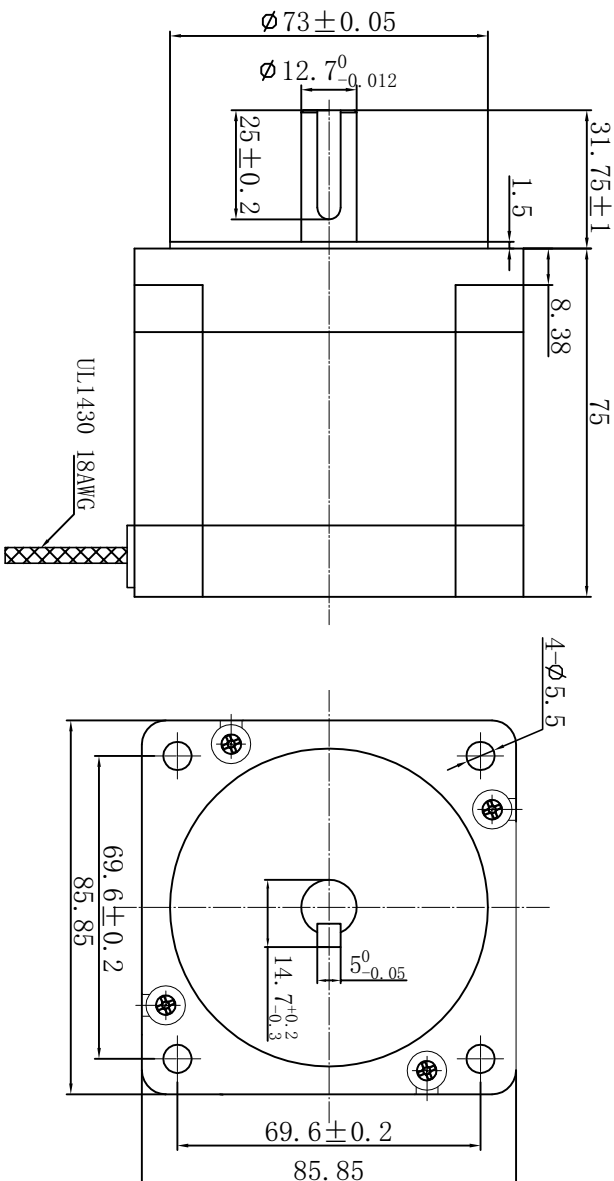


黑 (BLK) A  
 绿 (GRN) C  
 红 (RED) B  
 黄 (YEL) D

Exciting Sequence (励磁顺序)

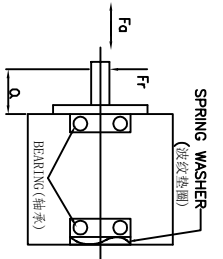
CW DIRECTION	STEP	A	C	B	D
↓	1	+		+	
	2		+		+
	3	+		+	
	4		+		+
	1	+			+

CW see from flange side  
 (顺时针, 从法兰侧看)



SPECIFICATION

PERMISSIBLE RADIAL+AXIAL FORCE  
 (允许的轴向和径向力)



STEP ANGLE	步距角	1.8°/full step (整步)
STEP ANGLE ACCURACY	步距角精度	±5%
NUMBER OF PHASE	绕组相数	2
RATED VOLTAGE	额定电压	2.34VDC
RATED CURRENT	额定电流	6.0A
RESISTANCE/PHASE	每相电阻	0.39±15% ohms@20°C
INDUCTANCE/PHASE	每相电感	3.0±20% mH@1kHz
HOLDING TORQUE	保持转矩	4.5N.m
PULL OUT TORQUE	运行转矩	N.m@ RPM
BACK EMF	反电动势	V @300RPM
DETENT TORQUE	定位转矩	N.cm
ROTOR INERTIA	转子转动惯量	1400 g.cm²
WEIGHT	重量	2.3kg
TEMPERATURE RISE	温升	Less than 80K (小于80开)
SOURCE VOLTAGE	驱动器电压	60 VDC
INSULATION CLASS	绝缘等级	B 150°C
DIELECTRIC STRENGTH	介电强度	900VAC 1S
INSULATION RESISTANCE	绝缘电阻	100MΩhm @500VDC
IP CODE	防护等级	IP30
OPERATION AMBIENT	使用环境	Ambient temperature:-20...+50°C, humidity Max. 85%(No condensation)
STORAGE AMBIENT	存储环境	Ambient temperature:-20...+85°C, humidity Max. 85%(No condensation)

REV	ECN NO.	DESCRIPTION	DRN	APP'D	DATE	DESIGN	DATE	P/N
A								
UNLESS OTHERWISE SPECIFIED			MATERIAL		CHECK		TITLE	
TOLERANCES:			CONTR.		APPD		Specifications	
ANGULAR:			FIRST ANGLE PROJECTION		SCALE		USED ON	
.xxx ±0.1			DO NOT SCALE DRAWING		SHEET		DWG NO.	
					OF		REV	
							A	
							FULLING MOTOR	